

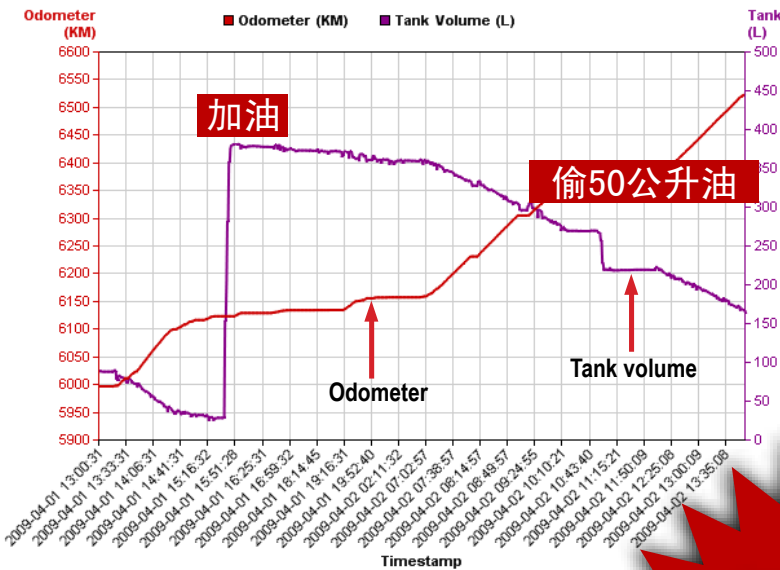
用GPS & DIESEL MONITORING SYSTEM

可帮您减少问题

GSM/GPRS + INTERNET

Fuel Analysis Chart (Odometer + Tank Volume)

Minimum Odometer : 5995.64 Minimum Volume : 25.07 Distance Travelled : 527.78
 Maximum Odometer : 6523.42 Maximum Volume : 381.72



已有**3000**
架货车已安装

想知道 更多详情, 请拨打

Tel: 03 6257 0509

Raymond - 019 3367 101

Ami - 019 2321 026

Daniel - 012 3809 422

Money - 019 6241 840

Adam - 019 2117 686

100% 捉偷油

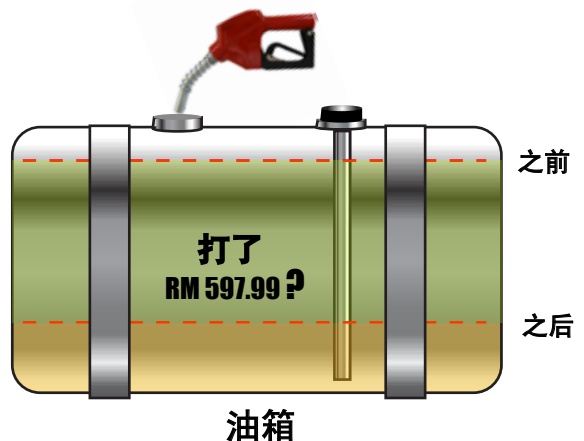
您可以上网查您货车:

在那里, 打了多少公升油, 几时打, 打了多少\$
 在那里, 偷了多少公升油, 几时偷, 偷了多少\$

是否打了RM 700 进油箱?



?



www.fuel.avls.com.my

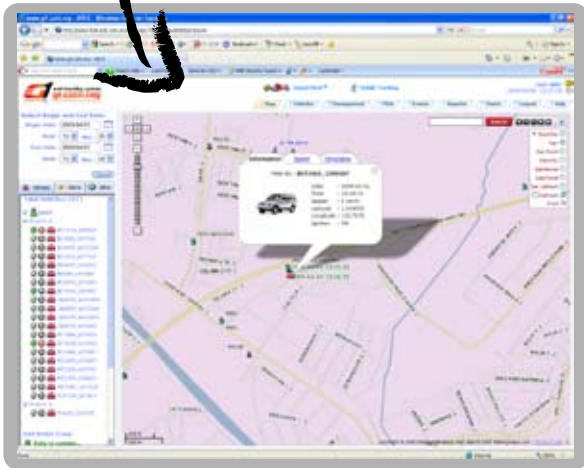
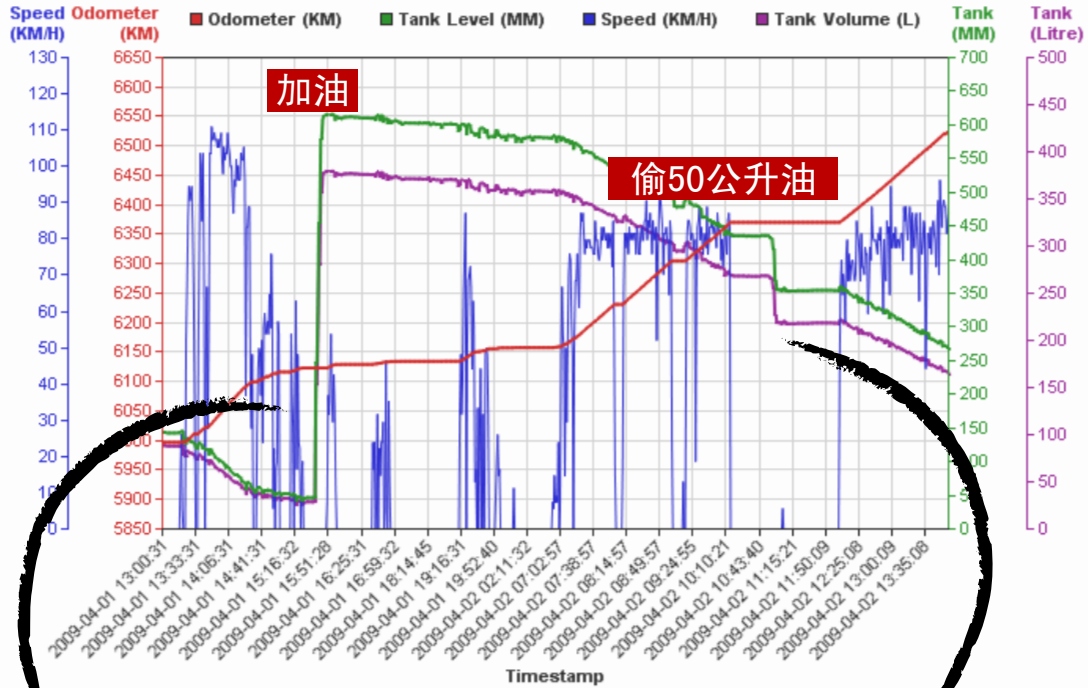
看看我们的系统怎样为您服务

Fuel Analysis Chart

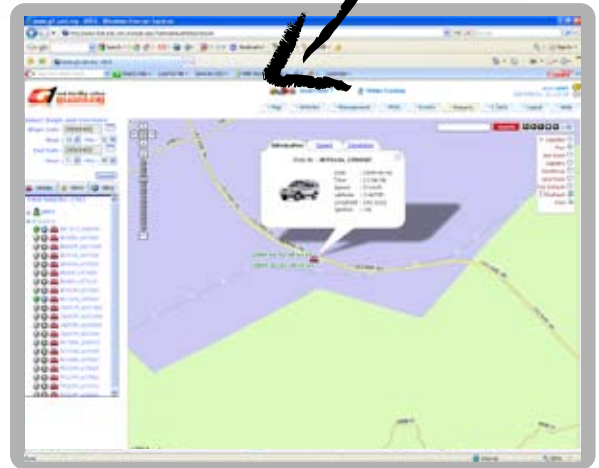
Minimum Odometer : 5995.64
Maximum Odometer : 6523.42

Minimum Volume : 25.27
Maximum Volume : 380.00

Distance Travelled : 527.78



加油图



偷油图

之前和之后加油表

Start Time	End Time	Location	Address	Tank Level Before Refuel (MM)	Tank Level After Refuel (MM)	Tank Volume Before Refuel (L)	Tank Volume After Refuel (L)	Refuel (L)	Total Refuel (RM)
2009/04/01 15:25:31	2009/04/01 15:49:31		SHELL P GUDANG HWY (0.0489 KM)	43.16	614.21	26.59	378.35	351.76	597.99

偷油报告

Start Time	End Time	Location	Address	Tank Level Before (MM)	Tank Level After (MM)	Tank Volume Before (L)	Tank Volume After (L)	Lost (L)
2009/04/02 10:52:45	2009/04/02 11:06:06		Pedas linggi (n) - l/b (0.0324 KM)	434.58	353.08	267.70	217.50	-50.20